

ARRL FIELD DAY 2018



Grid Chase!

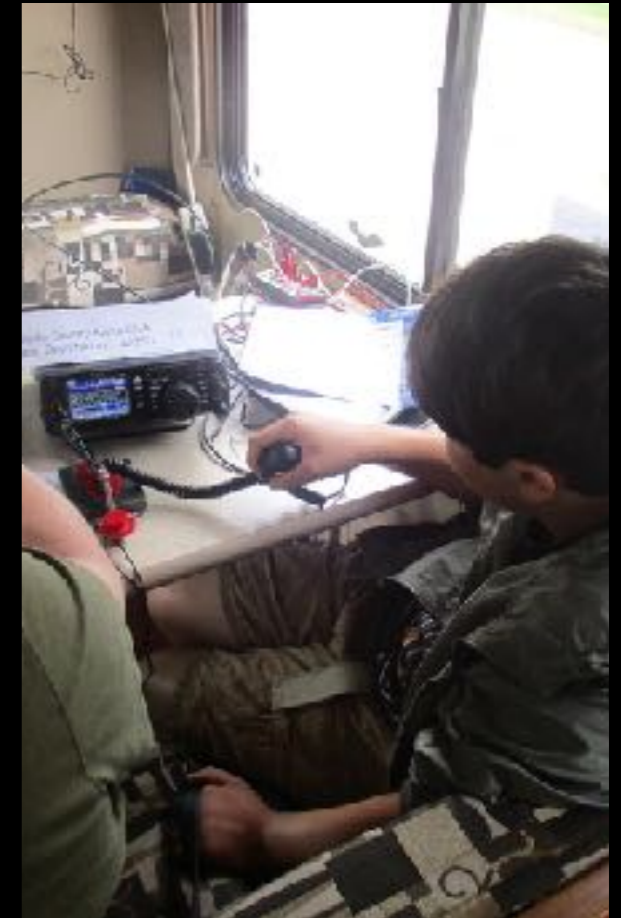


JUNE 22-23-24

CENTERVILLE - LAURIE LAMOTTE PARK

WHAT THE HECK IS FIELD DAY?

- A world-wide contest
- A world-wide emergency response exercise
- A fun time to socialize and meet other hams
- A family-friendly activity
- A 24-hour event (if you want it to be)
- Every year thousands of hams participate (individuals, groups, or clubs)



NEW IN 2018



- Cub Scouts pack 136 invitation for "Educational Activity"
- Saturday, 3:00PM scheduled time, approx 1 hour
- Lemon batteries or hands-on item. (this also could qualify as an alternative power source, but may be too low on the amps...)
- Field Day overview / kids who want to can operate for bonus points (on GOTTA or HF1)



REVIEW - LAST YEAR'S FIELD DAY

- By score, we were ranked 639 out of 2965 submitted scores (up from 1048th place worldwide in 2016). Beat 78% of scores.
- Beat all recent previous years.
- No data from ARES recorded in 2017. (no submission, or under a different call)
- QSO points driven by digital and CW contacts in 2017
- Two of top five MN clubs that beat us were single-op QRP stations with a QSO power multiplier of 5

OUR CLASS / SECTION - LAST YEAR'S FIELD DAY

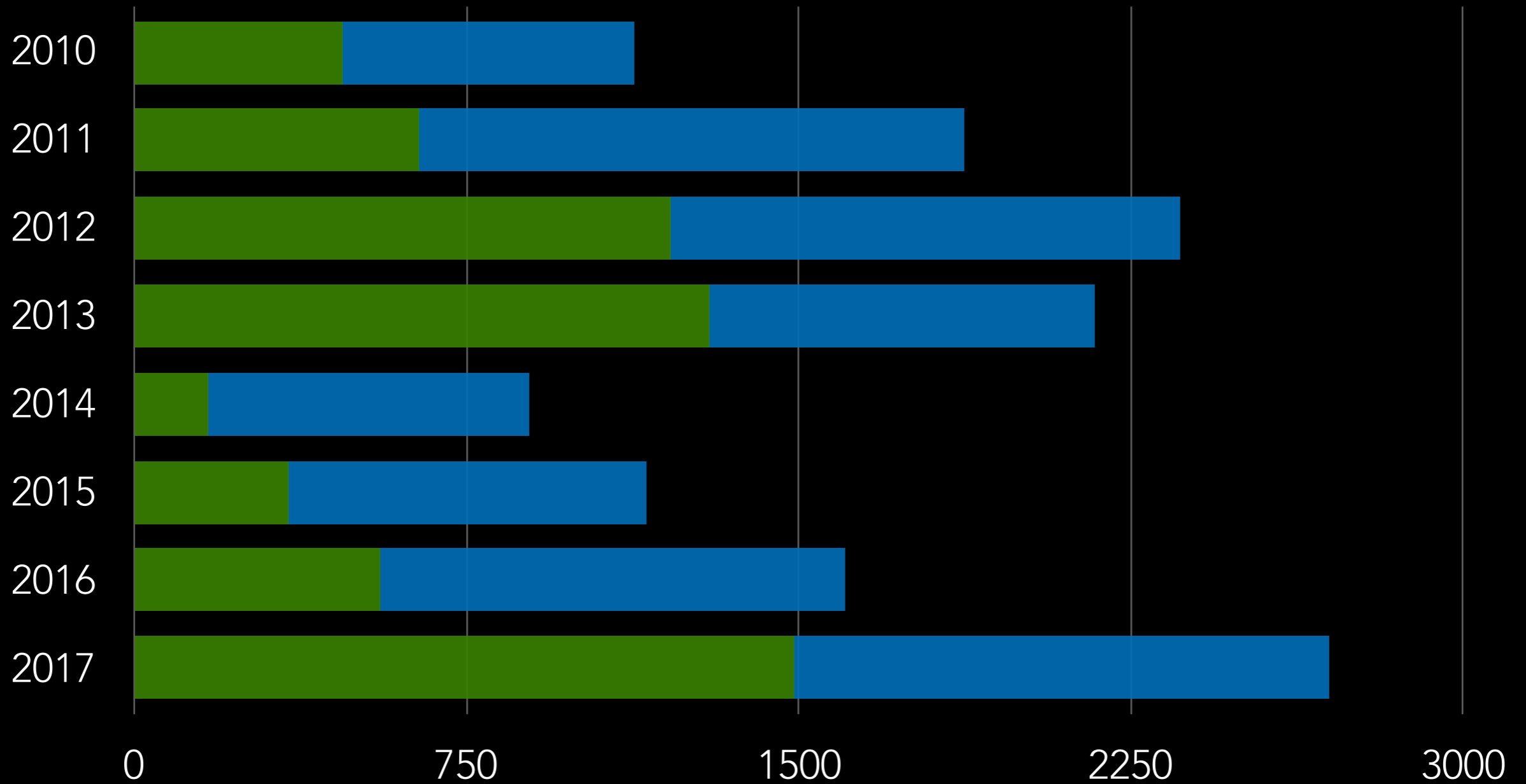
- Worldwide 140th place (up from 218th) compared to all 3A stations (322 total). Some room to advance yet!
- Third highest of all 3A-MN stations (same rank as last year)
- We were the 9th highest score of MN stations (up from 15th last year).

2017 MN STATS

#	CALL	SCORE	CATEGORY	QSOS	POWER MULT	GOTA CALL	SECTION	PARTICIPANTS	CLUB
1	N0AT	8,704	2A	1,876	2	K0AUG	MN	14	BLUE LAKE BROTHERS
2	WA0MN	7,045	1E	740	5		MN	1	
3	K0Z	6,088	3A	1,420	2	W0CAY	MN	25	ROCHESTER ARC
4	W0MR	5,444	2A	1,423	2	K0AGF	MN	34	MINING ARC AND ST PAUL RC
5	KE0TT	5,160	1B1B	501	5		MN	1	
6	N0UW	4,872	5A	1,038	2		MN	34	OWATONNA STEELE CO ARC
7	W0GKP	3,962	3A	974	2		MN	42	ARROWHEAD RADIO AMATEUR CLUB
8	W0G	3,694	1A	1,522	2		MN	4	BIG LAKE AR ENTHUSIASTS
9	W0YFZ	2,700	3A	540	2	KE0BRZ	MN	40	ANOKA CO RC
10	K0LTC	2,604	5A	509	2	K0YTH	MN	41	MAPLE GROVE RC
11	W0BU	2,512	3A	581	2	N0BAK	MN	26	TWIN CITIES REPEATER CLUB
12	K0K	2,320	5A	420	2		MN	21	SMARTS RC

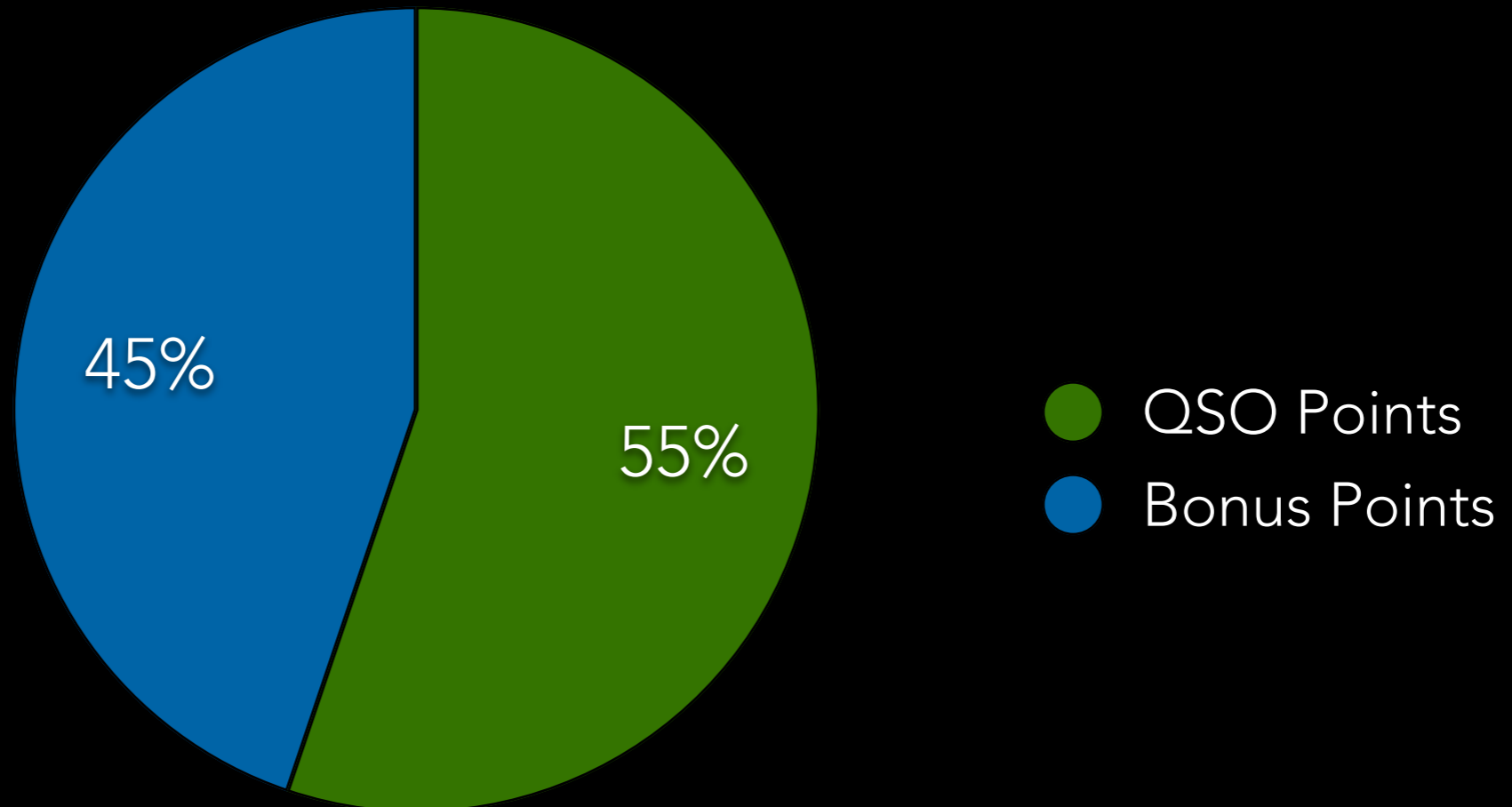
ACRC FD POINTS HISTORY

■ QSO Points ■ Bonus Points



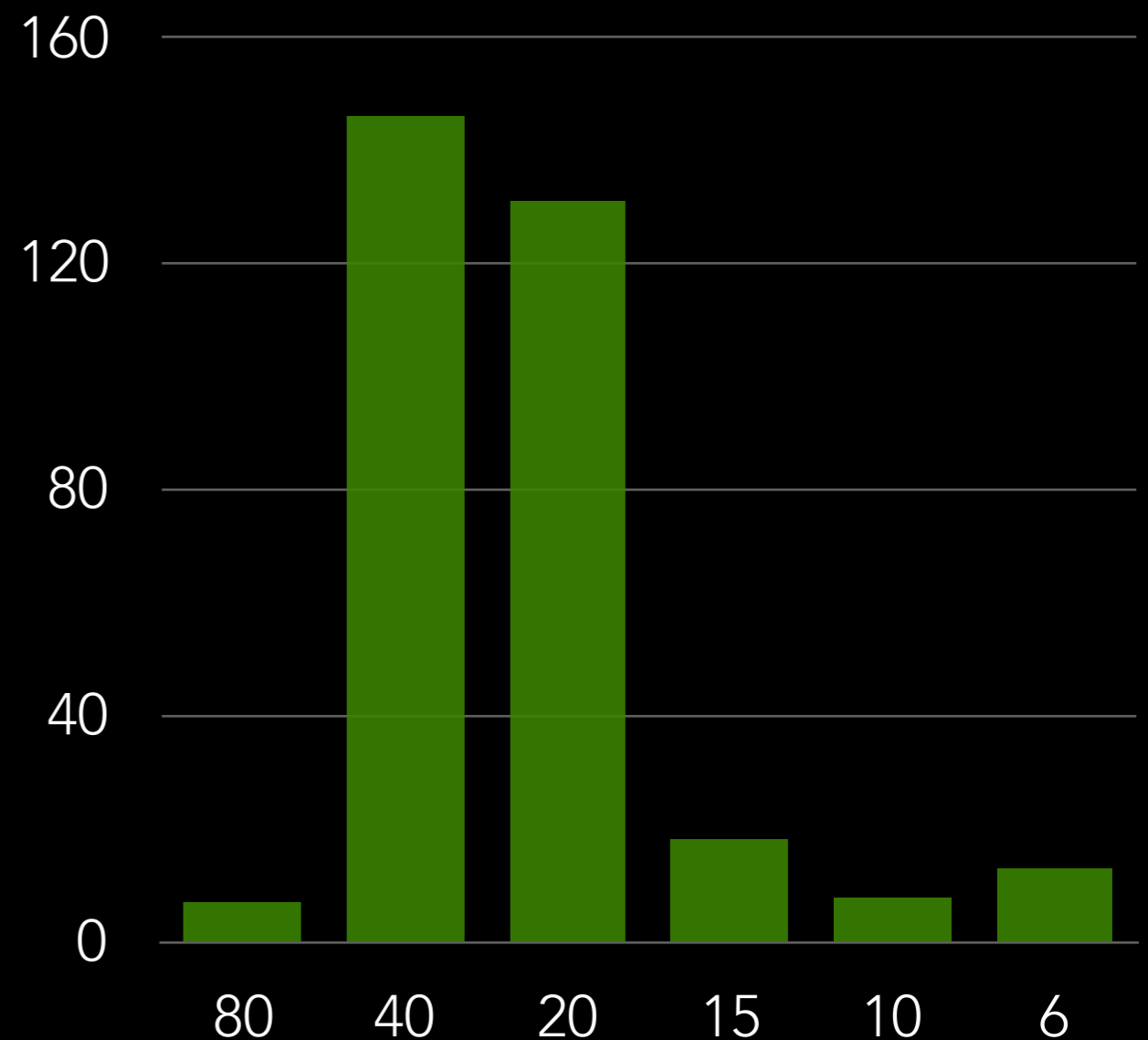
LAST YEAR'S POINTS BREAKDOWN

2017 POINTS BREAKDOWN

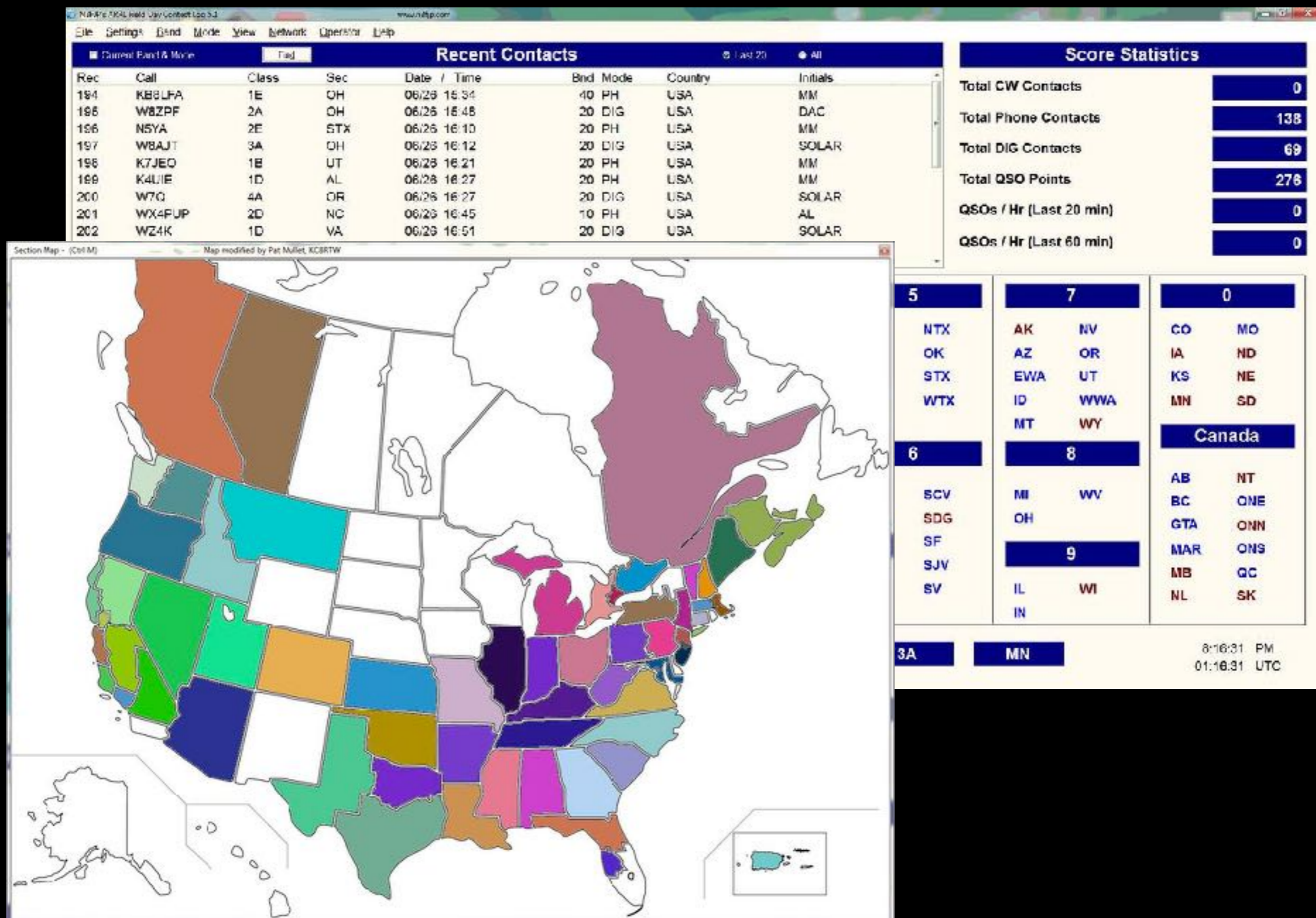


2017 CONTACTS

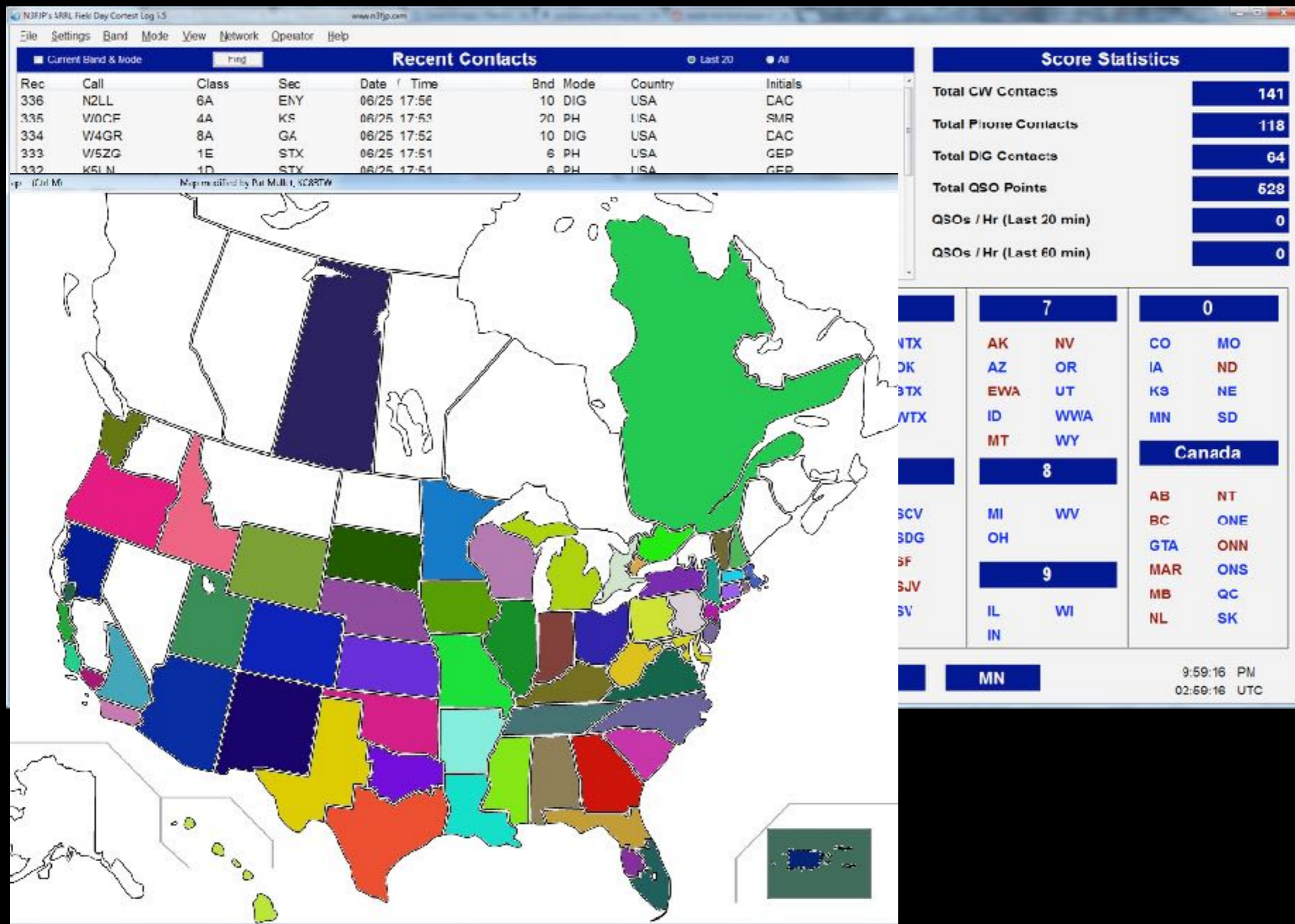
- 48 States/provinces (up from 42)
- QSO on 6 Bands - twice 2016
- Digital, voice, CW
- Most on 40, and 20 meters
- 5 countries / territories
- Did not get MT, ND, NV, AK
- Filled in our local "hole"
- ...but got most everything else...



2016 CONTACT MAP

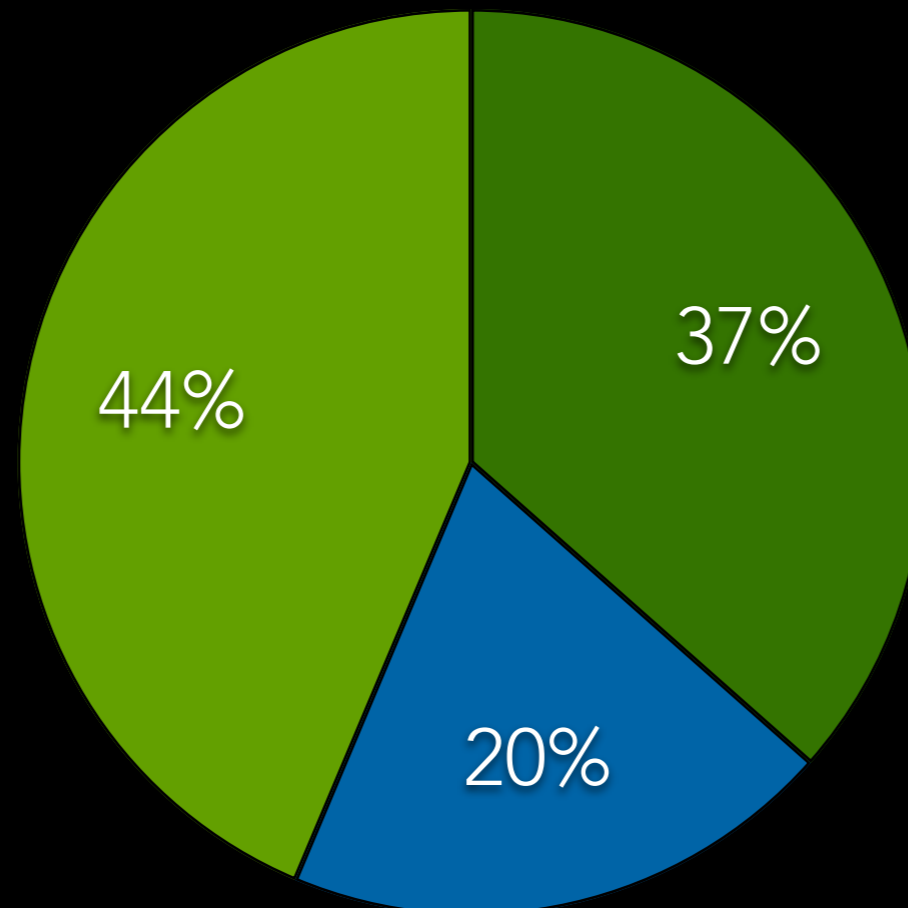


2017 CONTACT MAP



2017 QSO MODE BREAK-DOWN

● Phone ● Digital ● CW



ANOKA COUNTY RADIO CLUB FIELD DAY EVENT



- June 22, 23, 24
- 3A-MN - Station
- Location - Laurie LaMotte Park parking lot
- Two RV stations, one pop-up camper station
- Best behavior - publicity expected

FIELD DAY RULES - NO SIGNIFICANT CHANGES FOR 2018

- Bonus points for:
 - 100% Emergency Power
 - Media Publicity - Tim
 - Public Information Table - Tim
 - Message to section manager
 - Message Handling (NTS)
 - Satellite QSO
 - Alternate Power - Dale
 - W1AW Bulletin - Dale
 - Educational Activity - Tim (Scouts)
- Site Visit by Elected Official
- Site visit by representative of an agency
- GOTA - 20 QSO Bonus Points up to 500
- GOTA Coach
- Public Location - Tim (Permit already secured)
- Safety Officer - Tim
- Social Media

Preliminary assignments are negotiable. If you want to do something, say something!

LAMOTTE PARK



STATION HF1

- Sunseeker RV
- Yaesu FT-991A
- 20/40 dipole, End-fed
- Logging laptop and over
- Outdoor map display
- RV Generator / 200 amp hour battery
- CW "Mostly?"



STATION HF2

- Popup Tent Trailer
- Icom 718 / Icom 735
- Wire antenna
- Logging laptop
- Generator / Battery



STATION HF3

- Class A RV
- Various radios
- G5RV / speaker stands
- Logging laptop
- RV Generator
- Digital "Mostly"



GOTA

- Plan to operate as needed
- No shelter / vehicle for dedicated station (outside or tent/awning if weather is good)
- Rotating Radios - ICOM 706 plus whatever shows up!
- Maldol HMC-6S - 14/21/28/53/146/446 antenna or whatever shows up!
- Manual or non-network logging

VHF/UHF

- Entitled to run as a 2A or higher station
- HF1 station can try 6M, 2M, 440 at 12 feet
- No dedicated station planned - though we can use our VHF/UHF capable HF stations to fill in the close gaps
- Great use of time to switch to VHF/UHF if a person with an extra radio shows up and wants to operate HF. We can only use 3 HF stations at a time because we're a 3-A, but the VHF/UHF is an entitlement and doesn't count for one of the three. Just make sure your logs get entered!

LOCATION - LAURIE LAMOTTE PARK

- Feedback past years was good (this is Yr 4)
- Possibility for more public participation
- Picnic tables are already there
- Bathroom facilities already there
- Things for kids to do
- Automatic 100 bonus points for being on public property (yeah!)
- Permit is granted for non-exclusive use and overnight. (co-exist with other park users during open hours)



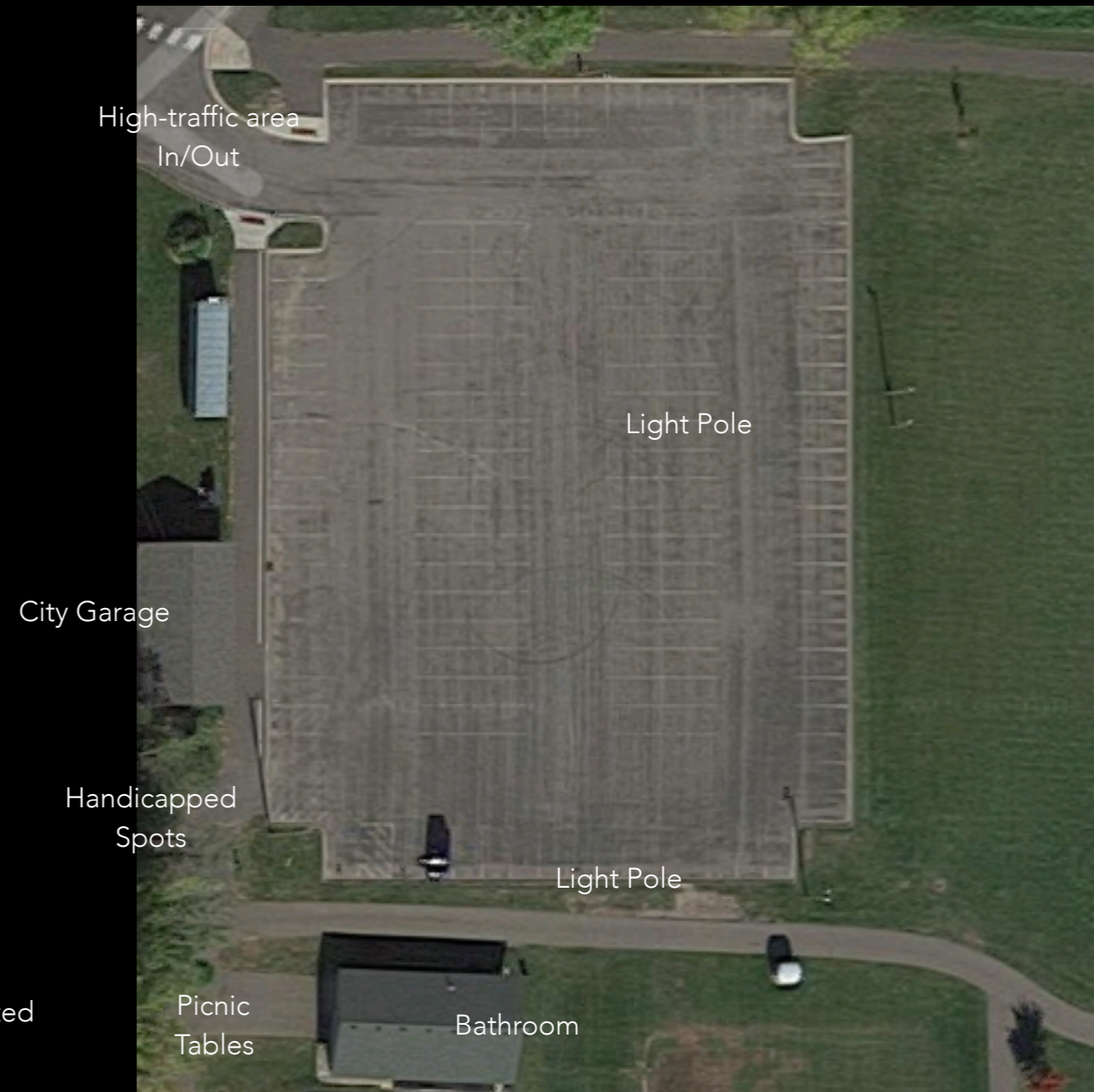
LOCATION - LAURIE LAMOTT PARK - CHALLENGING ASPECTS

- Use good judgement at all times
- Be prepared to use battery power if there are noise complaints or if diplomacy needs to be engaged.
- Must maintain illumination of entrances at night
- No alcohol consumption (this is less challenging for some people)
- Special event permit restricts 24/7 use to the parking lot
- Permission for camping overnight in RVs only
- Safety and PR considerations - want to be safe and project a good image
- Want to be welcomed back...

PARKING LOT LAYOUT - GOOGLE MAP

ARIAL VIEW:

- 150ft short side
- 248ft long side
- Parking Lot
- Plan avoids these areas



PARKING LOT LAYOUT - TENTATIVE

- 150ft short side
- 248ft long side
- Parking Lot only
- Tucked away more
- Close to light (on?)



FRIDAY, JUNE 22 - SETUP

- Setup begins 5:00 PM at Laurie Lamott Park in Centerville, MN (special event permit)
- There may be sports activities finishing up - social / testing time.
- Park RV and/or block off desired spots
- Setup - Logging server, antenna mast, antennas.
 - Test, test, test.
- Park closes to the public at 9:00

SATURDAY JUNE 23

- Field Day starts at 1800 UTC
- That's 1:00PM local
- No food service to public
- Media presence likely
- Scouts arrive at 3:00PM - siblings and/or help are welcome
- Pot luck for supper meal at 6:00 PM



SUNDAY JUNE 24

- Field Day ends for us at 1800 UTC (24 hours from start because we use Friday for setup - 1:00 PM local)
- Brunch planned for Sunday mid-morning
- Site cleanup / tear down after the contest
- Permit ends at 7:00 pm
- Please help clean up! We want to make a good impression whether or not we plan to re-use this site.

SEVERE WEATHER

- Severe weather plan - evacuate safely to nearest shelter
- Warming house may be temporary shelter but keep your transportation options open
- This is not theoretical - it's more of a tradition with us.



THANKS - SEE YOU THERE!

- Thanks to the city of Centerville for the use of their park and their help getting permits and paperwork together.
- ...and for their continued support of the 146.670 repeater receive site.
- All club members are encouraged to help with Centerville's Fete Des Lacs festival.

2018



Grid Chase!



FIELD DAY 2018